



GMT MONTHLY MEMBERSHIP PROGRESS REPORT

Results as of: 9/30/2023

Multiple District 9

LOCATION: IOWA

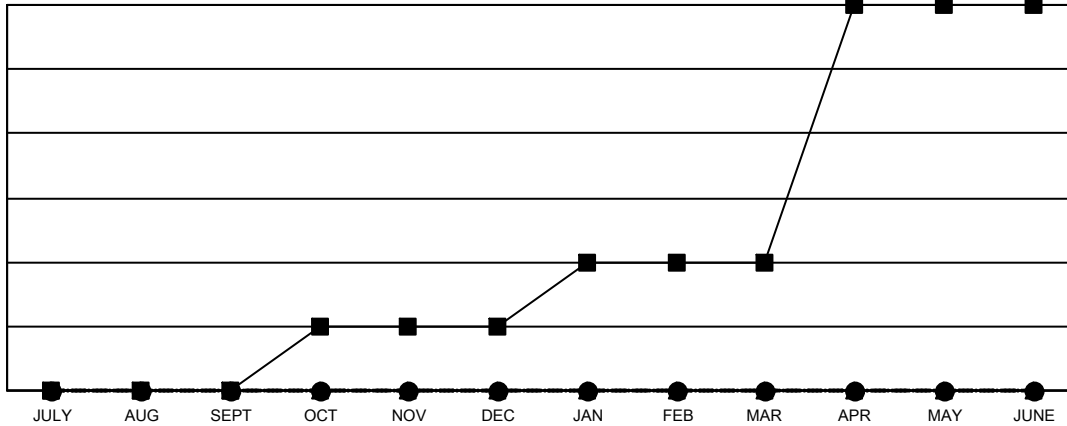
GMT: OPEN

GMT CA 1

Clubs			
RESULTS FOR 2023-2024			
QUARTER	NEW CLUB GOAL	NEW CLUBS	DROPPED CLUBS
JULY/AUG/SEPT	0	0	1
OCT/NOV/DEC	1	0	0
JAN/FEB/MAR	1	0	0
APR/MAY/JUNE	4	0	0

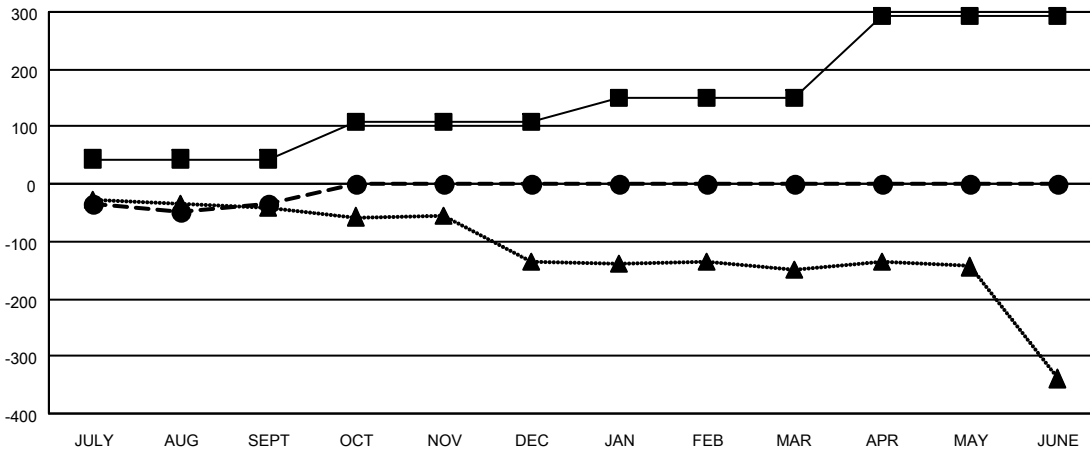
Members			
RESULTS FOR 2023-2024			
QUARTER	MEMBER GROWTH NET GOAL	MEMBER GROWTH ACTUAL	DROPPED MEMBERS ACTUAL (including transfers)
JULY/AUG/SEPT	44	144	168
OCT/NOV/DEC	63	0	0
JAN/FEB/MAR	43	0	0
APR/MAY/JUNE	144	0	0

GOALS AND ACTUAL NEW CLUBS CUMULATIVE



- - CURRENT YEAR GOALS FOR NEW CLUBS
- - CURRENT YEAR ACTUAL NEW CLUBS
- ▲ - LAST YEAR ACTUAL NEW CLUBS

GOALS AND ACTUAL MEMBERS CUMULATIVE



- - MEMBER GROWTH NET GOAL
- - MEMBER GROWTH ACTUAL
- ▲ - LAST YEAR MEMBERSHIP ACTUAL

DROPPED CLUBS: 1	64 CLUBS OF 273 ADDED 1 OR MORE NEW MEMBERS	GENDER DISTRIBUTION
		MALE 4,684 (71.76%)
		FEMALE 1,843 (28.24%)
DROPPED MEMBERS	CLICK HERE FOR CUMULATIVE MEMBERSHIP DATA	TOTAL FAMILY UNIT MEMBERS 1,405
DECEASED 25		FAMILY MEMBERS PAYING HALF DUES 714
CLUB CANCELLED 0		
OTHER 144		
TOTAL 169		